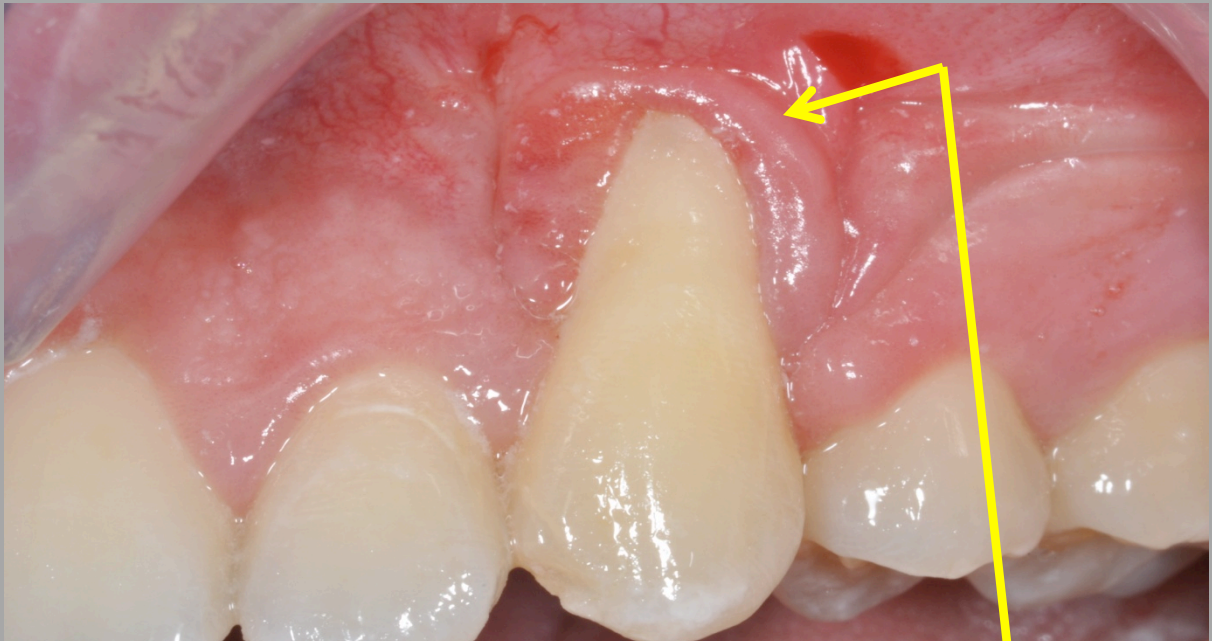


Gingival Grafting #11

Background: AO had severe recession on tooth #11. One of the main causes of the recession was the position of the tooth. Soft tissue grafting was done in an effort to add gum tissue and also try to recover part of the root.



Initial Appearance



After Grafting Procedure

Testimonial: "Thank you so much! My tooth looked like a big fang and I was told I had to have the tooth extracted.... Now I keep my tooth and it looks great!"